



SD SMART SHEDS

SPECIFICATIONS

Size (L x W x H)

- Closed (flatpacked): 6,058 x 2,440 x 555mm
- Open (per unit): 6,058 x 2,440 x 2,776mm (excluding door & stairs)
- Open (double stacked): 6,058 x 4,880 x 5,552mm (excluding door & stairs)
- Inner Size:
L 5.719m x W 2.315m x H 2.504m
- Weight: 2,000kg per unit



The SD SMART SHED is an easily deployable, foldable container for fast, practical and comfortable on-site vending.

The SD Smart Shed is a multifunctional 20ft pop-up unit for retail purposes such as merchandising, retail and ticket sales. The SD Smart Shed are able to link together on either the long or short side. The long side of the unit can be opened with the assistance of a gas spring, ensuring a seamless and safe transition. The unit is equipped with an integrated lockable service table with a quality surface. The high-quality technological design features sidewalls constructed from PIR foam sandwich panels. These panels provide heat and sound insulation and are both waterproof and flame retardant (B1). The incorporation of an invisible folding hinge with a self-locking system contributes to the overall safety and reliability of the unit's operation.

LOGISTICAL ADVANTAGES

- 10 Units can be loaded onto a standard truck trailer
- Decreases logistical costs
- Decreases the space needed for warehousing by 80%
- It can be on and off loaded, set up and dismantled with the one machine (forklift lifting lugs, telehandler, crane)
- Environmentally friendly with 80% reduction of CO2 emission
- Fast deployment and installation

OPERATIONAL ADVANTAGES

- **Quick** – setup and dismantle on levelled surfaces
- per unit **Safe** – due to the patented hinge mechanism
- **High comfort** – insulated containers can be cooled or heated (optional aircon)
- **Multifunctionality** – retail unit, bar, ticket office, office, storage
- **Mobile, scalable and modular**

Just lift the canopy and drop-down the counter and you have the perfect unit for any retail operation.

Contact our team today to discuss your next event

**NEW
PRODUCT**

Phone: (02) 4626 5337
www.splashdown.events
 E-Mail: info@splashdown.events
 Address: 4 Frost Rd Campbelltown, NSW 2560



NEW

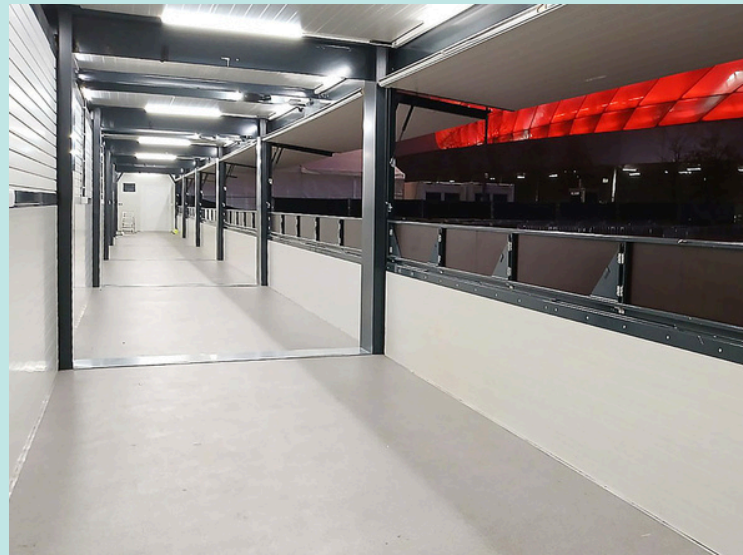
PRODUCT

Contact our team today to discuss your next event

Phone: (02) 4626 5337
www.splashdown.events
E-Mail: info@splashdown.events
Address: 4 Frost Rd Campbelltown, NSW 2560



Phone: (02) 4626 5337
www.splashdown.events
E-Mail: info@splashdown.events
Address: 4 Frost Rd Campbelltown, NSW 2560



Phone: (02) 4626 5337
www.splashdown.events
 E-Mail: info@splashdown.events
 Address: 4 Frost Rd Campbelltown, NSW 2560